

CHALLENGE #1: WHERE  
DOES IT GO

DID YOU  
KNOW...?

WELL, LET'S  
SEE!

OH  
YEAH!?



IDDPNQL



FNQLSDI

The 4R-E principle follows a **hierarchical** principle, which means that it follows a logical order, from the most important to the least important:

- ⊕ Reduce,
- ↓ Reuse,
- Recycle,
- Recover and
- ⊖ Eliminate



The easiest waste to eliminate is waste that is not produced!

The most important thing is to **REDUCE** consumption, which is the first “R” of the 4R-E principle.

**4Rs**

Reduce/Reuse/Recycle/Recover

The glass you put in the recycling bin can be used to make:

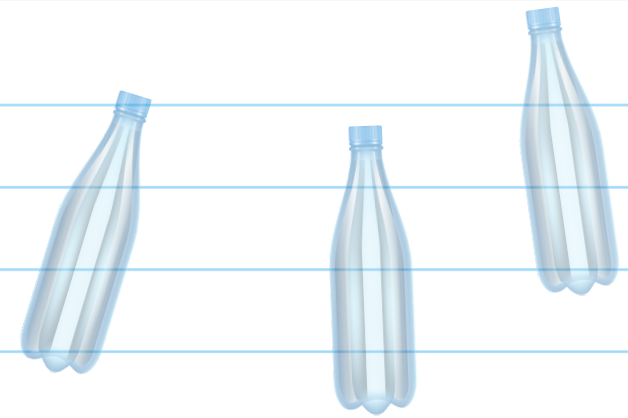


New glass containers

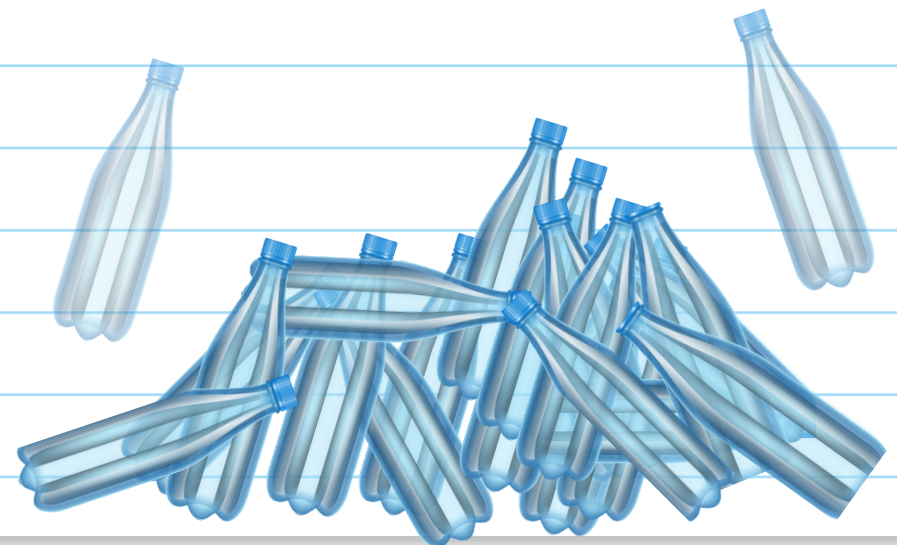
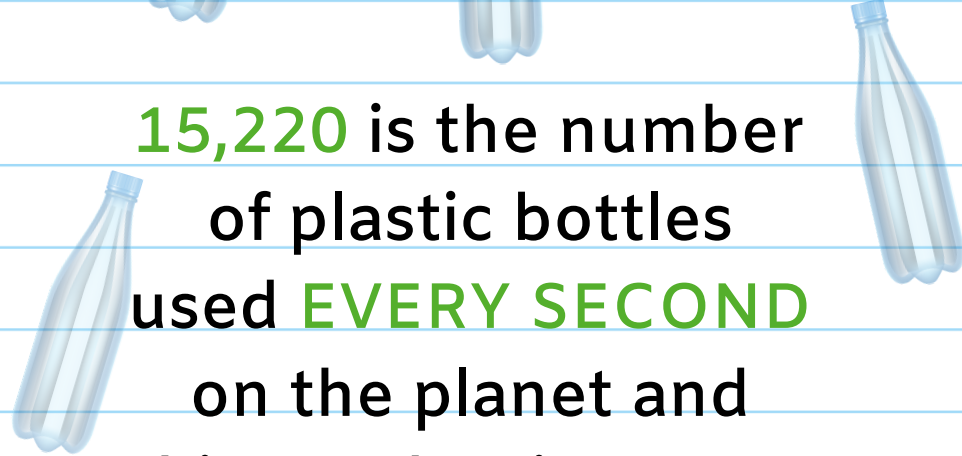
Sidewalks



Insulating materials



**15,220** is the number of plastic bottles used **EVERY SECOND** on the planet and this number increases every year.



The same piece of paper can be recycled 8 to 12 times.



The plastic you put in the recycling bin can be used to make:



Bike helmets

Park benches



Clothes

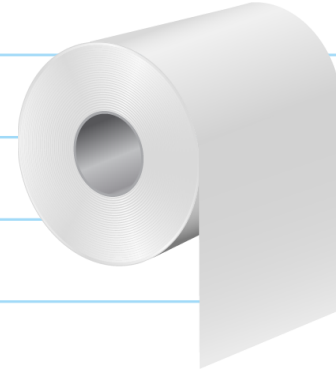
60,000 plastic bags are thrown away every 5 seconds.



Get a reusable bag! You could even make one from old fabrics that you no longer use!

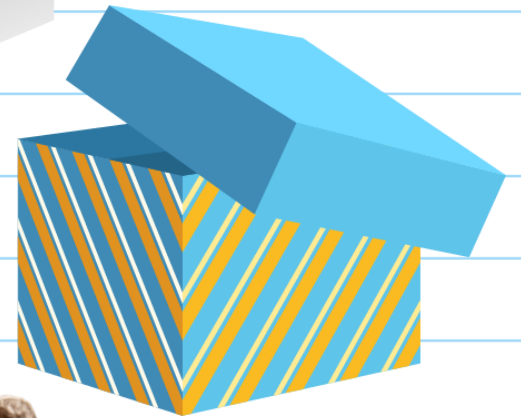


The paper and cardboard you put in the recycling bin can be used to make:



Toilet paper

Various boxes



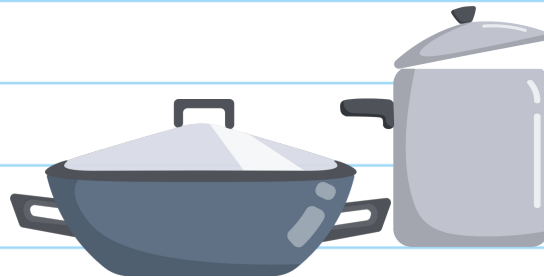
Egg cartons

The metal you recycle can be used to make:



Auto parts

Cookware



Cans

What happens to plastic waste?



Only 9% of it is recycled.

12% is incinerated.



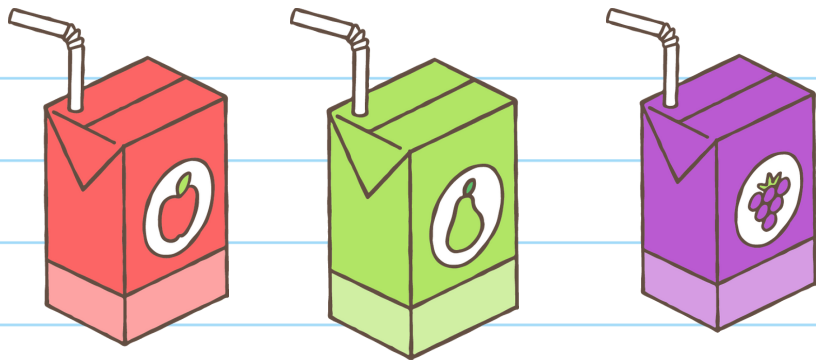
79% is buried or released in the environment.

Put all numbered plastics in the recycling bin! (Except for #6)

The recycling of cardboard juice boxes in Quebec makes it possible to avoid cutting 131,226 trees per year and saves 295 million litres of water.

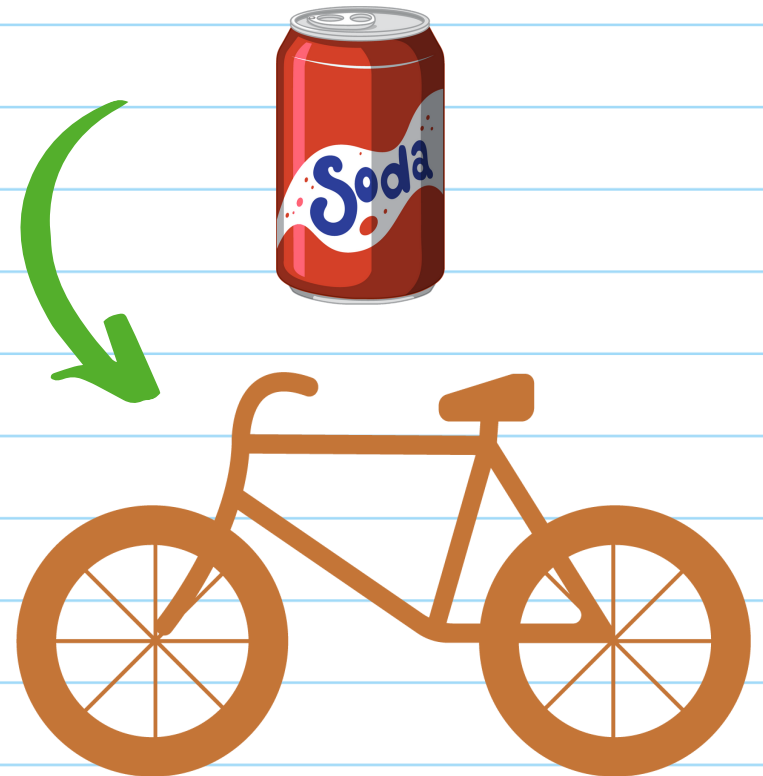
That's 100 Olympic pools filled with water!

Always deposit your juice boxes in the recycling bin.



Did you know that it takes 670 recycled cans to make 1 bicycle?

By recycling them, you give them a second life!





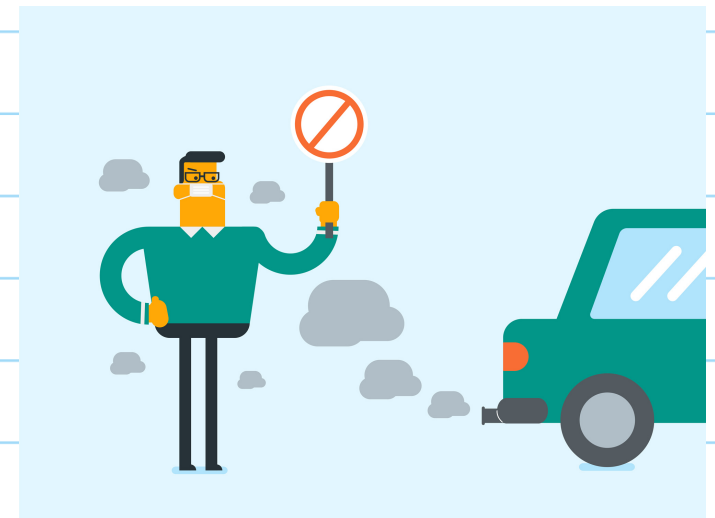
Of the 100 kg of recyclable materials generated by a household, only 62.5 kg end up in the recycling bin.

This is just barely over a passing grade.



Recycling paper allows for avoiding the emission of nearly 390,000 tons of CO2 each year.

That is the equivalent of the emissions of 200,000 cars in a year!



Aluminum cans can be infinitely recycled without losing their properties.

Recycling aluminum is making a simple gesture for the good of the planet!



It is necessary to put all soft plastics in the same bag to facilitate sorting. In other words, fill a bag with bags!



Even when very dirty,  
aluminum goes to recycling.

Just make a little ball with  
your aluminum plate or foil.

Aluminum is the most  
profitable material to  
recycle!

