

# ImpactMap Reference Tool

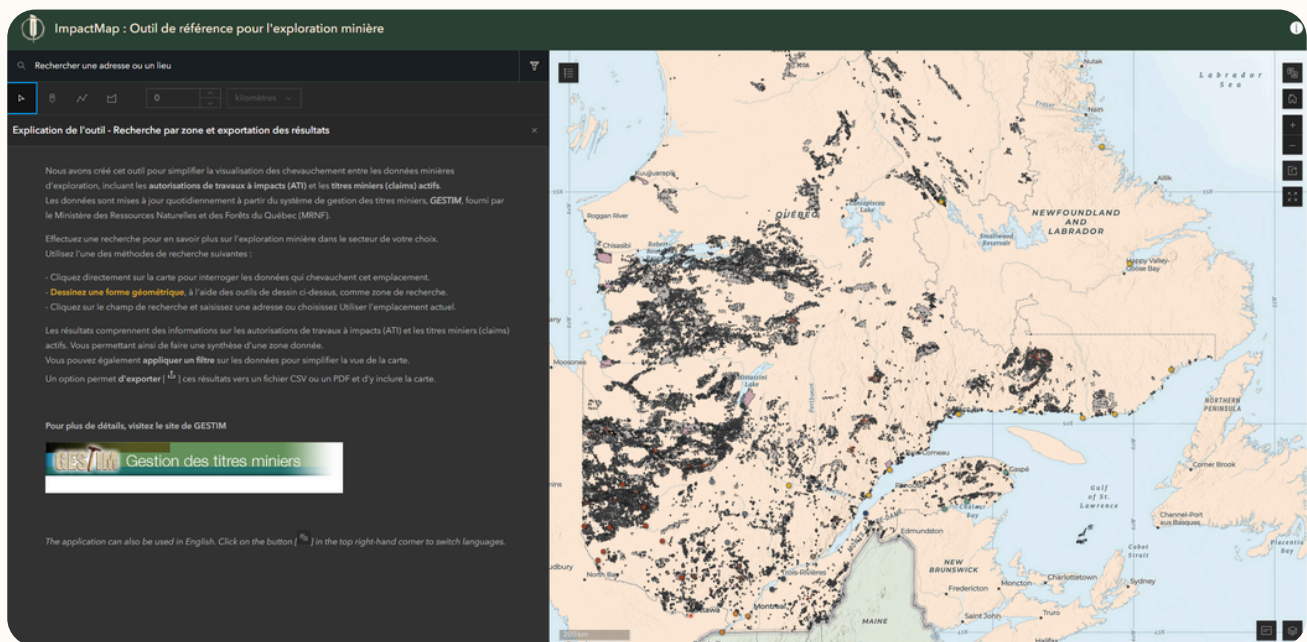
## Mining Reference Tool

June 2025

[!\[\]\(919a2cb85b99741a73c0c31a427236a8\_img.jpg\) Direct access to the map](#)

## How to use ImpactMap

ImpactMap allows you to conduct in-depth research to explore mining activity in the sector of your choice. **Follow this guide to maximize the use of this powerful tool.**



## Different Search Methods



By an entity



From a line



From a point



From a polygon

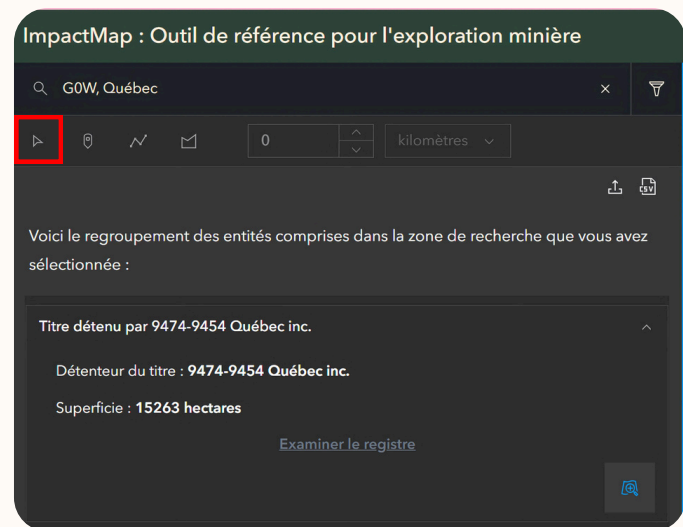
## Direct Click



**How to do it:** Activate the tool and click directly on any map feature

**Result:** Instantly visualize all data that overlaps this specific location

**Ideal for:** Quick consultation of a specific area



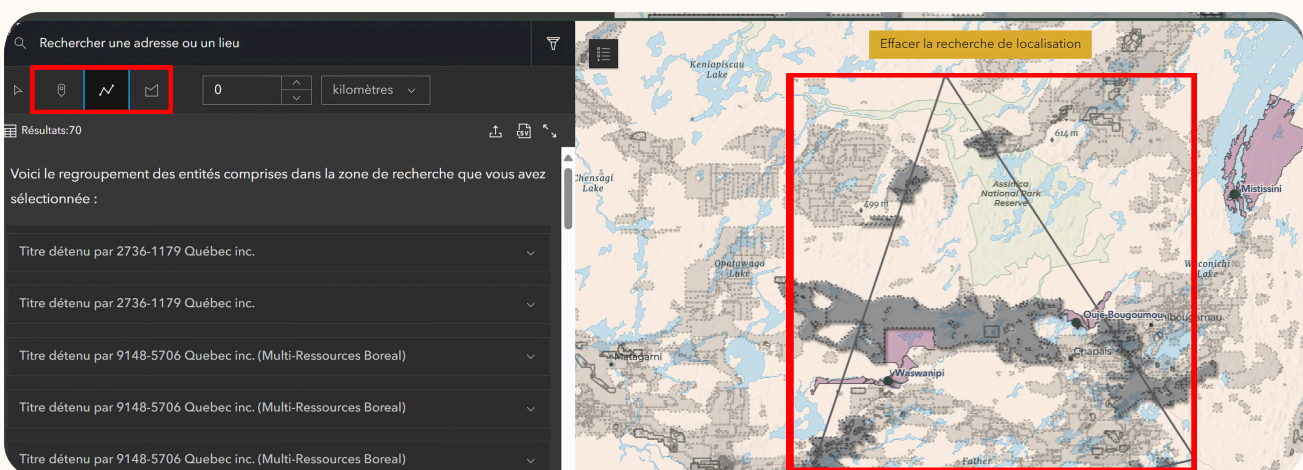
## Geometric Drawing



**How to do it:** Use drawing tools to trace a geometric shape (point, line, polygon)

**Result:** Define a custom search area according to your needs, then specify a search radius in kilometers

**Ideal for:** Analyzing an extended region or an area with specific contours



# Address Search

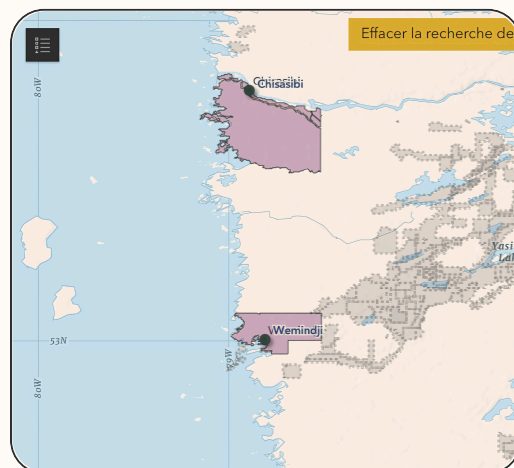
🔍 Chisasibi, QC, CAN

Chisasibi, QC, CAN

Chisasibi Heritage And Cultural Centre, Salluit, QC, J0M 1E0, CAN

**How to do it:** Click on the search bar at the top. Enter a complete or partial address, or select “Use current location” for your GPS position

**Ideal for:** Quickly locating a known address or town



## Features and Benefits

### Detailed Results

#### What you get. Complete information on:

- Impact Work Authorizations (IWAs) – pending and active
  - Type of work
  - Project title
- Active mining claims
  - Holder

\*Most GESTIM information is not available in English

ATI-62 | 105190

**Informations détaillées pour # ATI-62**

Type de travaux : **Forage au diamant**

Demandeur : **Q2 Metals Corp. (# 105190)**

Projet : **Cisco**

État : **Traitement terminé**

Début des travaux : **2024-05-20**

Expiration : **2026-04-28**

Localisation : **Nord-du-Québec (Jamésie)**

# Polygone : **403732892**

Superficie : **1744.83 ha**

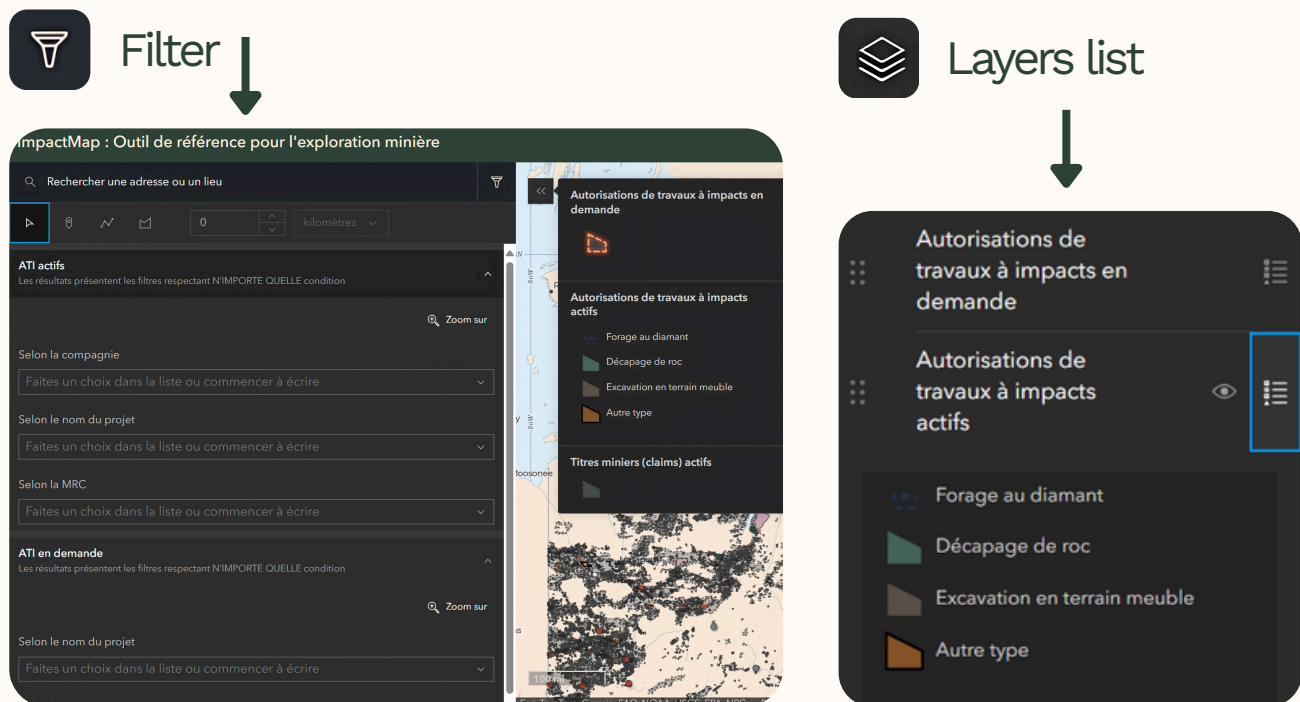
Conditions de réalisation des travaux

Condition1	Mettre en place les mesures de sécurité appropriées, définies par règlement, suivant la cessation des activités, le cas échéant.
Condition2	Enlever du terrain, qui fait l'objet des travaux à impacts, tous les biens du titulaire de claim ou de la firme de service qui a réalisé les travaux.
Condition3	Aucune

# Advanced Filters

## Customize your view

- Apply specific filters according to your criteria
- Simplify the map display for better readability
- Focus only on information relevant to your research



## Data Export

### Share your results



- **CSV:** For data analysis and spreadsheets
- **PDF:** Visual map include for your reports and presentations
- **Usage:** Perfect for overview of current and upcoming consultations, documentation and team decision-making

# Up-to-date Data

## Guaranteed temporal reliability

---

- Automatic daily update at 9:15 a.m. from the download path on the *GESTIM* public directory and republication as an ArcGIS hosted service
- Access to the most recent information from the Ministry of Natural Resources and Forests of Quebec (MRNF in French)
- Official, source-verified data redistribution

## Usage Tips

### Guidelines

---

- Use our tool on your computer for the best experience, as it is not optimized for small screens
- Our ArcGIS hosted services are online and can be added to your maps and projects with the following links:
  - **Pending** <https://www.arcgis.com/home/item.html?id=c6e21a53bbe442258554e1db761851f6>
  - **Active** <https://www.arcgis.com/home/item.html?id=4cfff028b82b4f76bc5042faf76db681>

### For best results

---

- Refine your search with the available filters
- Target in-demand IWAs with shiny red frames
- Export important data for archives and reports

More information available on *GESTIM*